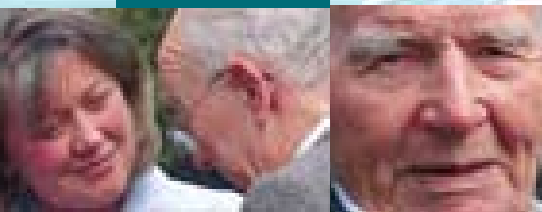


Hampstead Hospital

A facility for the
care and support of
age related
Mental Health issues.



Part of the Highfield Hospital Group

hampstead hospital



Welcome

The Highfield Hospital Group is a privately owned group, providing top quality Hospital, Residential and Convalescence services in north Dublin City. We pride ourselves in providing our Residents with the best medical and nursing services available.

Hampstead Hospital is a period residence steeped in history. Established in 1825 by Dr John Eustace, it has a long and proud tradition of providing care and support for a wide range of age related health issues, ensuring a high standard of care and support in surroundings of comfort, safety, dignity and privacy.



Assessment

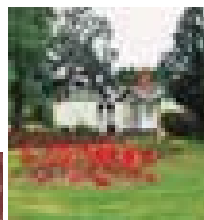
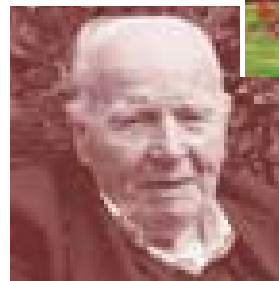
An assessment may be carried out in, our consultant suite, a referring hospital or in some circumstances the individuals home. Information will be gathered also from other relevant care providers. A further assessment will be carried out on admission and a programme of support to meet particular requirements will be drawn up. This will be reviewed regularly. The focus will be on setting and meeting realistic goals.



Care Team

Medical Care

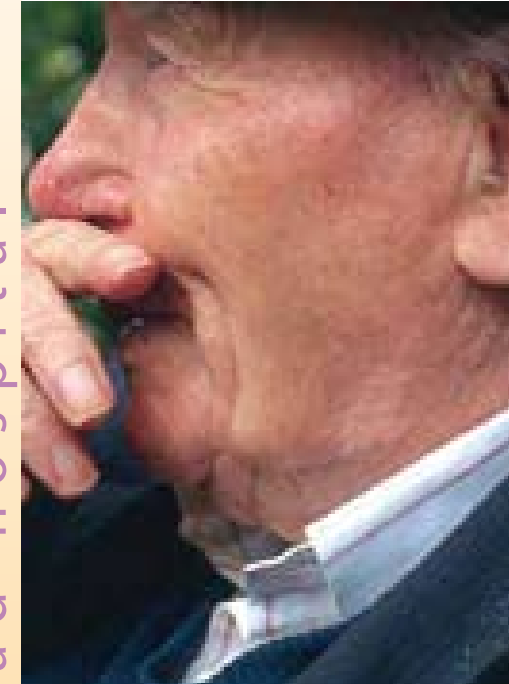
Headed up by our own resident Consultant Psychiatrist and supplemented by locum psychiatrists, medical care is provided 24 hours a day 7 days a week. All residents are reviewed on a daily basis ensuring that medical and psychological needs are met.



Specialist Nursing

The Director of Nursing is responsible for care management and works closely with all staff in the hospital ensuring they are aware of all the residents' needs and are maintaining the highest possible standards of care.

Specialist 24-hour nursing services are provided with the appropriate registered nurses, and supported by care assistants. The skill mix and numbers of nurses will be based on the assessed needs and dependency of the individuals receiving care at any one time, although the core numbers will remain the same. Additional expertise can be accessed as and when necessary.



hampstead hospital



General Information

Accommodation Features

Hampstead Private Hospital provides accommodation for 44 male residents. Comprising two floors care is divided into high dependency on the ground floor, with those requiring medium care being accommodated on the upper floor. Rooms are a combination of single, twin and companion rooms.

Visiting arrangements

At Hampstead we know and recognise that keeping in touch with your relatives and friends, is important. We welcome visitors at any time but we would ask that anyone intending to visit before 10.30AM or after 8.00PM should let us know beforehand.

hampstead hospital

Social and Recreational Activities

Hampstead Hospital provides a range of social and recreational activities to complement the health care services provided. We have diversional therapists who visit on a regular basis and who organise, amongst other things, quizzes, music, gentle exercise sessions and handcrafts. These activities can be adjusted dependent upon the individual and group needs at any one time. Please note that all activities provided at Hampstead are optional and are entirely voluntary. There is no pressure on anyone to participate.

Spiritual /Cultural Needs

Hampstead will make every effort to accommodate and support the individual spiritual and cultural needs of residents. Local clergy regularly visit the hospital and we are proud of the fact that we are one of the few such facilities to have their own Pastoral Care Department, providing support to residents and families.



hampstead hospital

hampstead hospital

Set in the grounds of the historic Hampstead Castle Estate, Hampstead Hospital is accessed via Hampstead Avenue in Glasnevin north of Griffith Avenue. Residents, relatives and friends will appreciate the easy access offered being approx. 2 miles from Dublin City centre and its proximity to the M50 motorway, the East Link Bridge and the Dublin Port Tunnel. In addition its location is well serviced by public transport.

How to find us



Enquiries, admissions & fees

Hampstead Private Hospital is approved by VHI and is registered as a private hospital. To receive further information regarding vacancies, suitability or fees please contact the Liaison Nurse on +353 1 837 4444 or visit our web site at

www.highfieldhospital.com



Hampstead Private Hospital,
Hampstead Avenue,
Glasnevin, Dublin 9.

E-mail info@highfieldhospital.com